

CERTIFICATE OF LOCATION OF GOVERNMENT CORNER

NORTHWEST Corner of Section 31, Township 105N, Range 42W, 5th P.M.

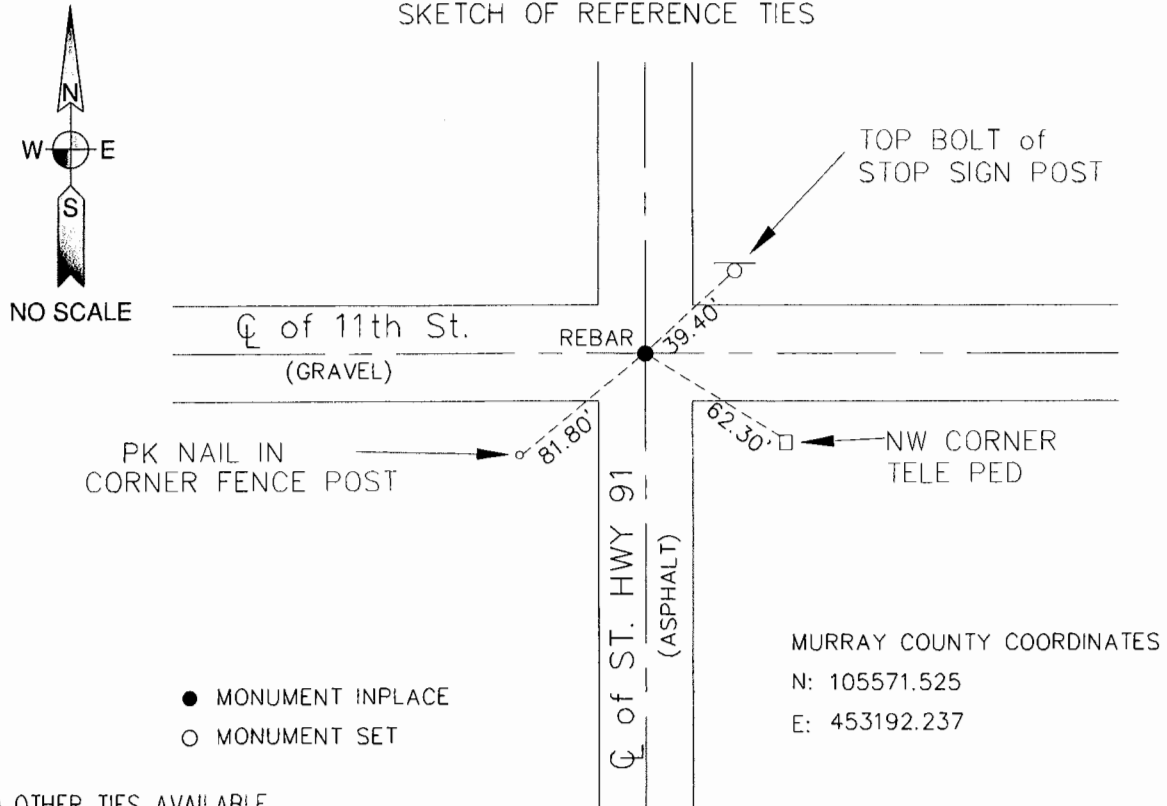
STATE OF MINNESOTA, County of MURRAY

At the corner location shown on the sketch:

On 2-27-08 found a PK NAIL
DATE

left monument as found, lowered monument, removed monument (explain)
 On _____ placed a _____
DATE

SKETCH OF REFERENCE TIES



NO OTHER TIES AVAILABLE
BEARING SYSTEM IS BASED ON MN, STATE PLANE COORDINATE SYSTEMS, SOUTH ZONE.

Statement of evidence relative to this corner location is on back of page.

I hereby certify that this document and the data contained herein was prepared by me or under my direct supervision.

[Signature] 3-17-08
SURVEYOR'S NAME DATE

Registration No. 40827

- Land Surveyor, Professional Engineer
 County Surveyor, County Engineer

OFFICE OF THE COUNTY RECORDER

County of MURRAY

I hereby certify that this document was filed in the Co. Recorders office at _____ .M. on the _____ day of _____ A.D., 20____

County Recorder [Signature]
By _____, Deputy

DOCUMENT NO. MAR 18 2008

STATEMENT OF EVIDENCE:

____NORTHWEST____ CORNER, SECTION 31, T. 105 N., R. 42 W.,
____MURRAY____ COUNTY, MINNESOTA

- 1861 J.W. Myers, U.S. Deputy Surveyor, monumented corner.
- 2008 Ulteig Engineers, Inc., Survey Crew, Jay Johnson Party Chief, found a Pk-nail.
Ties: SW-81.80' to a pk-nail in corner fence post;
SE-62.30' to northwest corner of telephone pedestal;
NE-39.40' to top bolt of stop sign post.